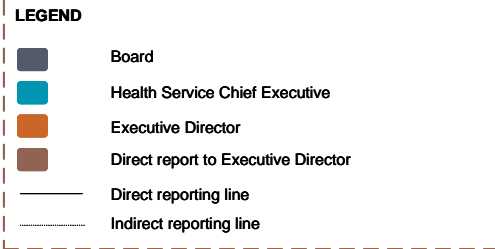
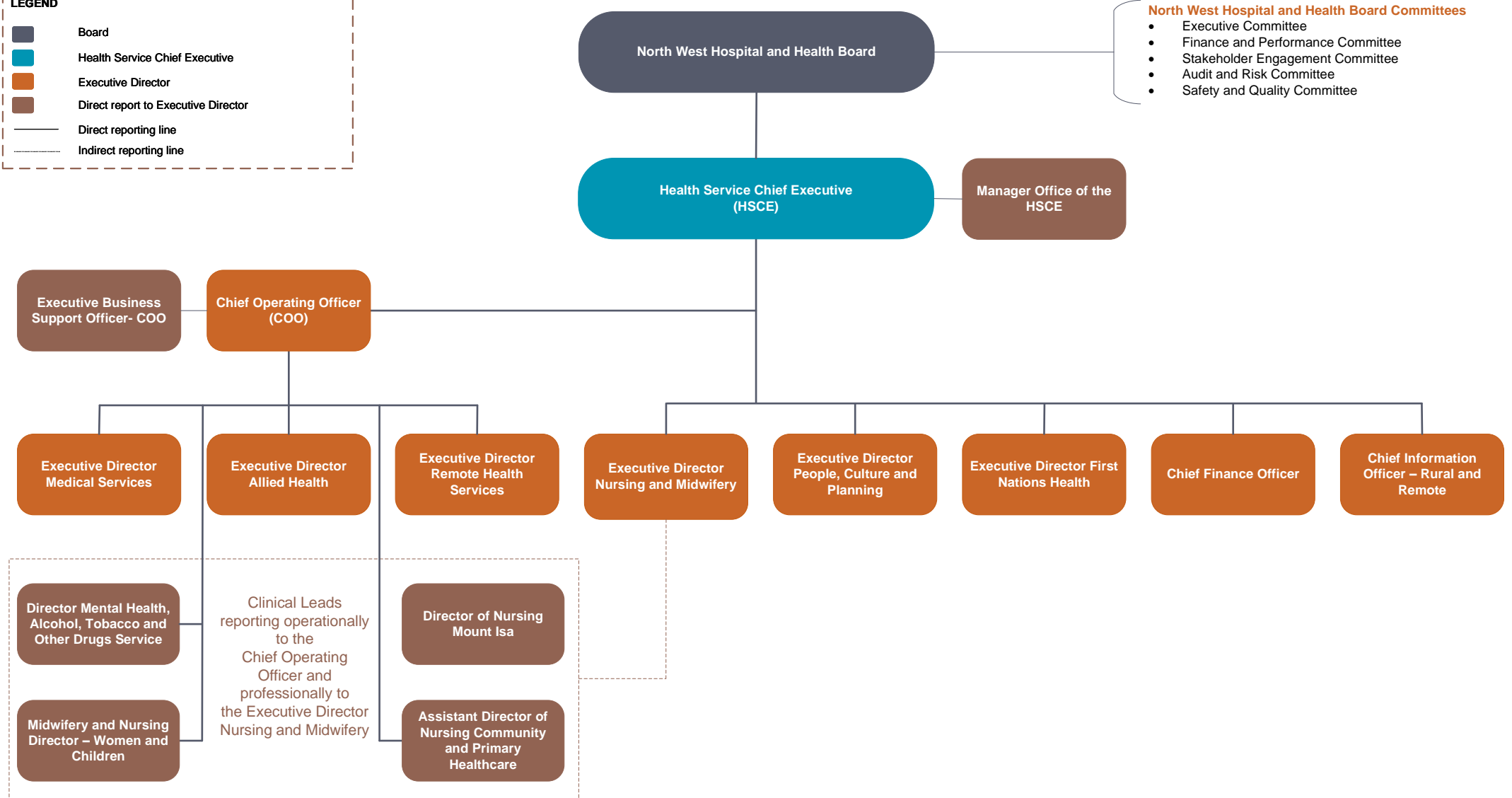


North West Hospital and Health Service Organisational Structure



- North West Hospital and Health Board Committees**
- Executive Committee
 - Finance and Performance Committee
 - Stakeholder Engagement Committee
 - Audit and Risk Committee
 - Safety and Quality Committee



Nurses and Midwives have a professional reporting relationship to the Executive Director Nursing and Midwifery
 Medical Officers have a professional reporting relationship to the Executive Director Medical Services
 Health Practitioners have a professional reporting line to the Executive Director Allied Health
 Identified positions have a professional reporting line to the Executive Director First Nations Health

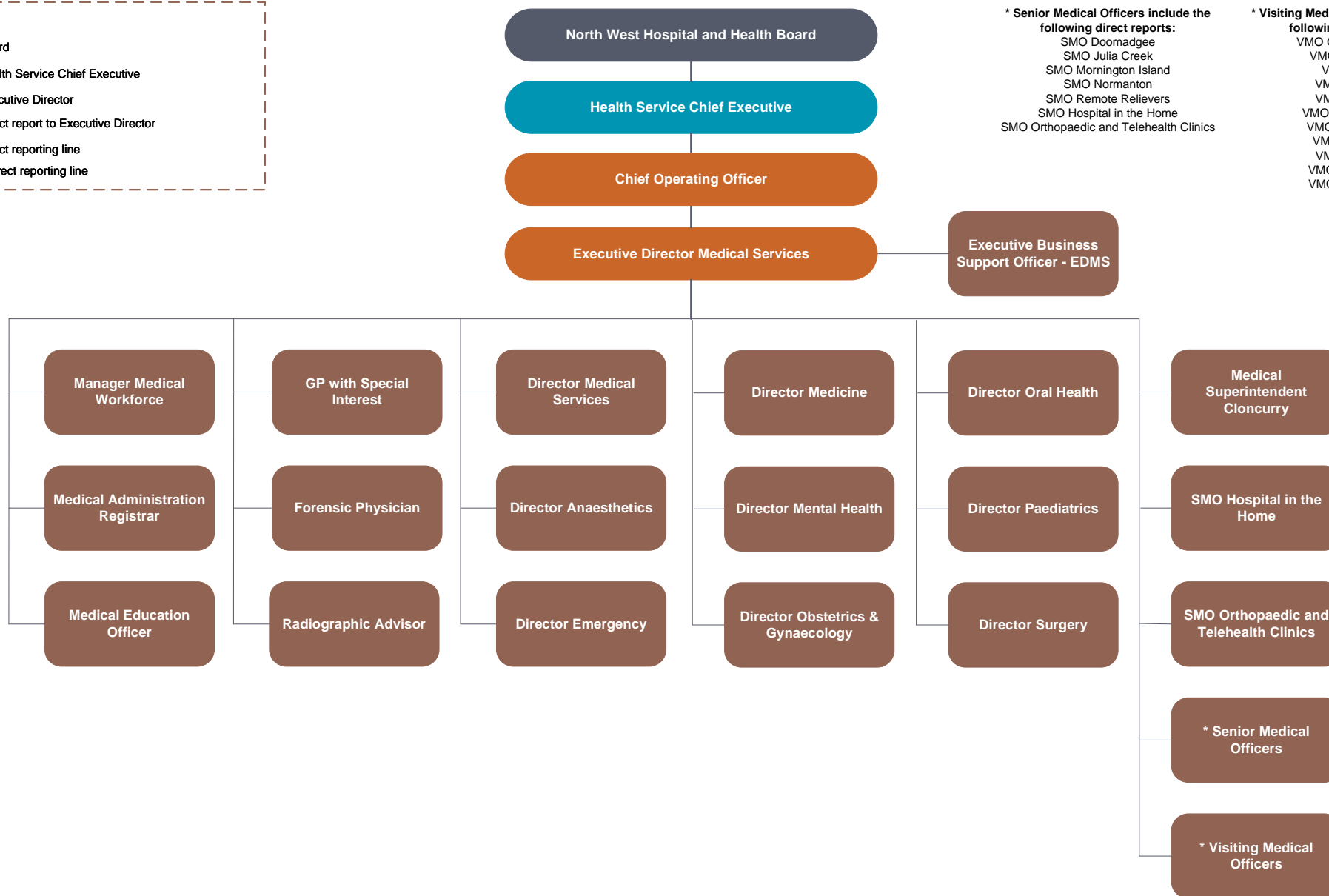
North West Hospital and Health Service

Divisional Structure – Executive Director Medical Services



*** Senior Medical Officers include the following direct reports:**
 SMO Doomadgee
 SMO Julia Creek
 SMO Mornington Island
 SMO Normanton
 SMO Remote Relievers
 SMO Hospital in the Home
 SMO Orthopaedic and Telehealth Clinics

*** Visiting Medical Officers include the following direct reports:**
 VMO Gastroenterology
 VMO Maxillofacial
 VMO Medical
 VMO Neurology
 VMO Obstetrics
 VMO Ophthalmology
 VMO Orthopaedics
 VMO Paediatrics
 VMO Radiology
 VMO Anaesthetics
 VMO Dermatology

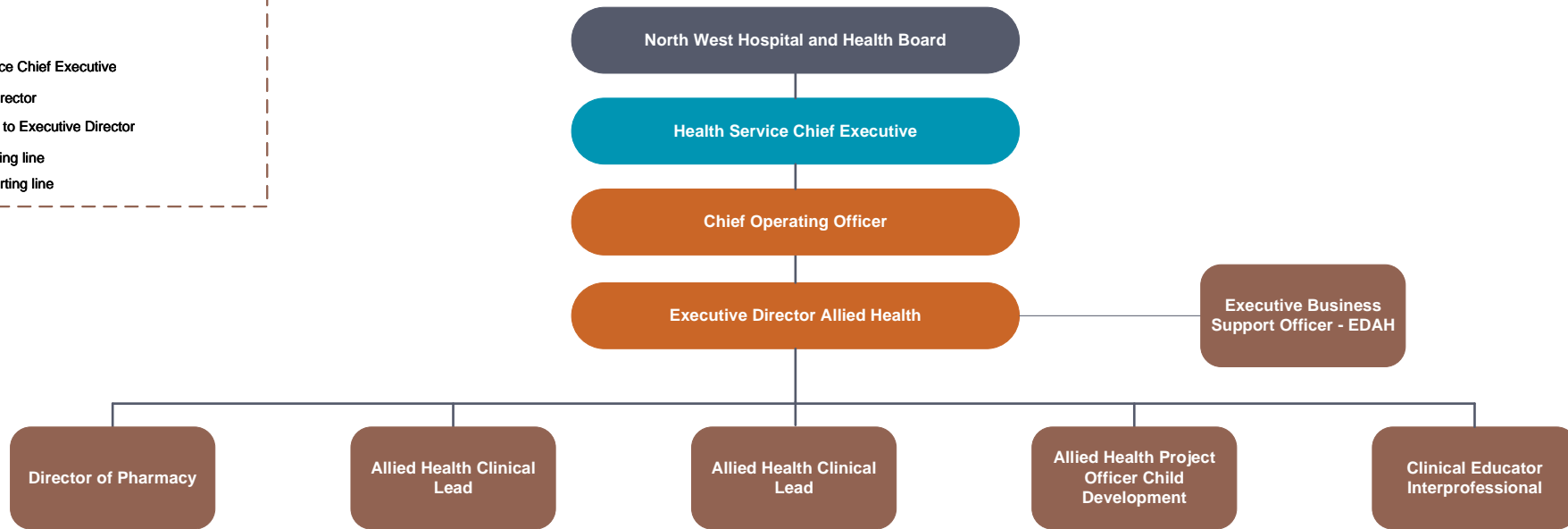


Nurses and Midwives have a professional reporting relationship to the Executive Director Nursing and Midwifery
 Medical Officers have a professional reporting relationship to the Executive Director Medical Services
 Health Practitioners have a professional reporting line to the Executive Director Allied Health
 Identified positions have a professional reporting line to the Executive Director First Nations Health

North West Hospital and Health Service Divisional Structure – Executive Director Allied Health

LEGEND

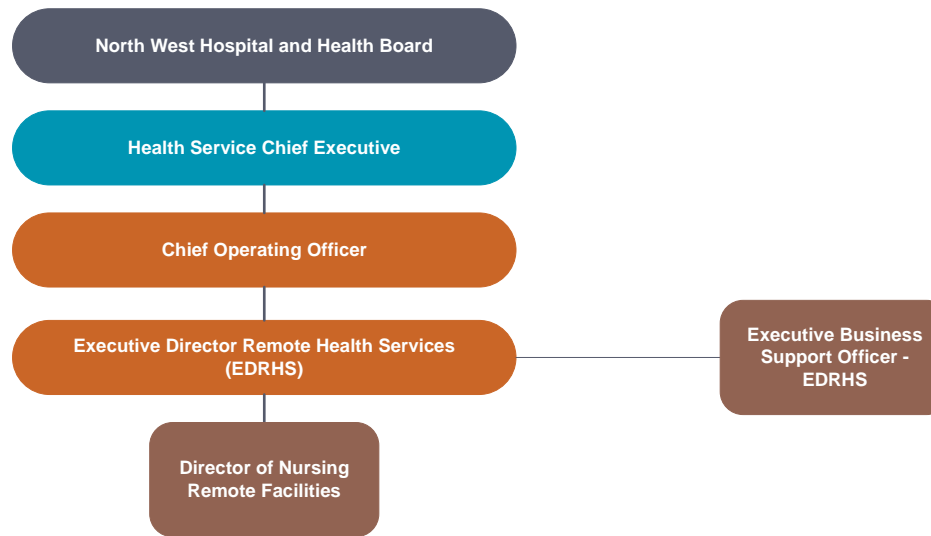
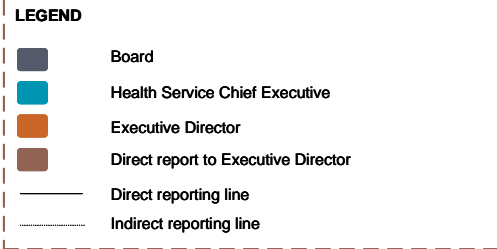
- Board
- Health Service Chief Executive
- Executive Director
- Direct report to Executive Director
- Direct reporting line
- ⋯ Indirect reporting line



Nurses and Midwives have a professional reporting relationship to the Executive Director Nursing and Midwifery
 Medical Officers have a professional reporting relationship to the Executive Director Medical Services
 Health Practitioners have a professional reporting line to the Executive Director Allied Health
 Identified positions have a professional reporting line to the Executive Director First Nations Health

North West Hospital and Health Service

Divisional Structure – Executive Director Remote Health Services



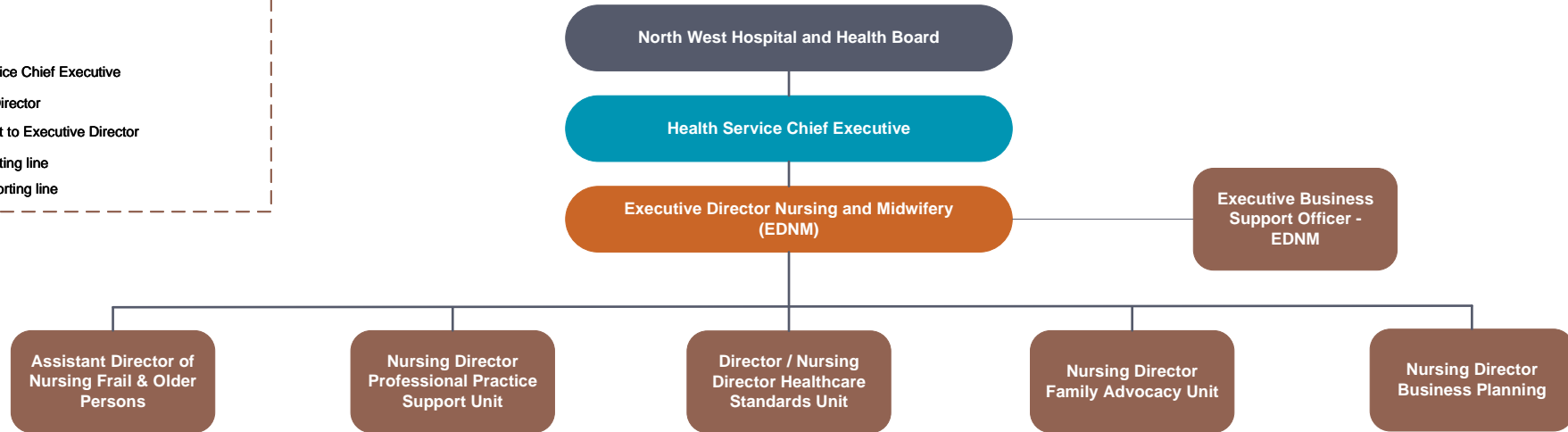
Nurses and Midwives have a professional reporting relationship to the Executive Director Nursing and Midwifery
 Medical Officers have a professional reporting relationship to the Executive Director Medical Services
 Health Practitioners have a professional reporting line to the Executive Director Allied Health
 Identified positions have a professional reporting line to the Executive Director First Nations Health

North West Hospital and Health Service

Divisional Structure – Executive Director Nursing and Midwifery

LEGEND

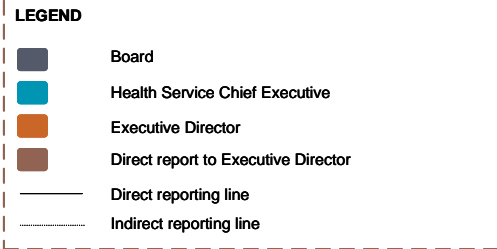
- Board
- Health Service Chief Executive
- Executive Director
- Direct report to Executive Director
- Direct reporting line
- Indirect reporting line



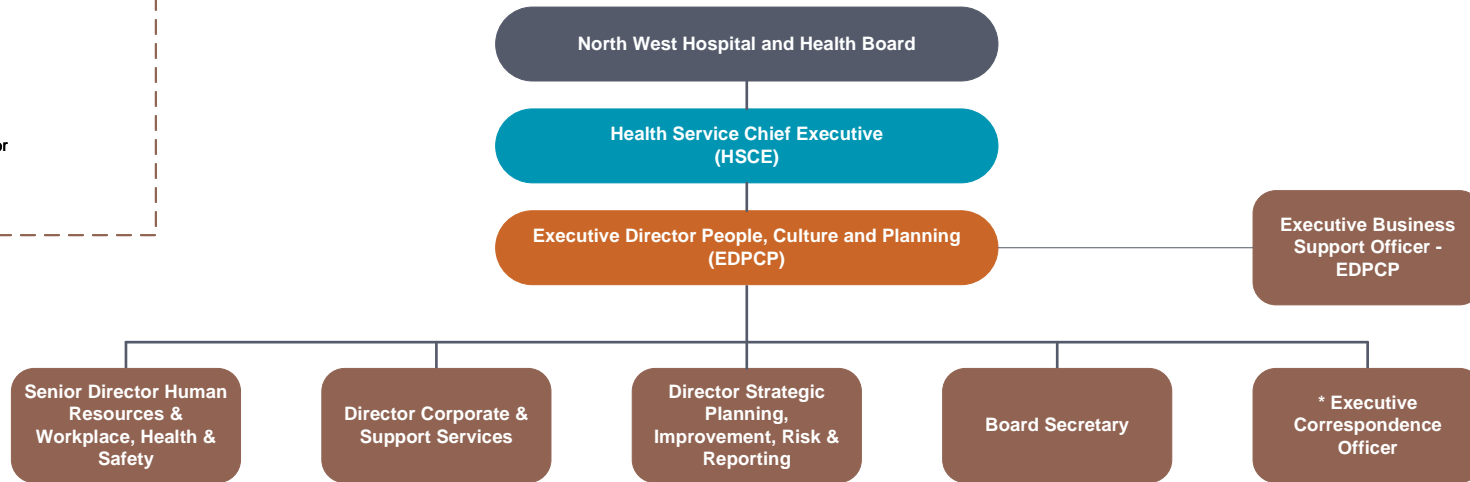
Nurses and Midwives have a professional reporting relationship to the Executive Director Nursing and Midwifery
Medical Officers have a professional reporting relationship to the Executive Director Medical Services
Health Practitioners have a professional reporting line to the Executive Director Allied Health
Identified positions have a professional reporting line to the Executive Director First Nations Health

North West Hospital and Health Service

Divisional Structure – Executive Director People, Culture and Planning



* Position reporting line is currently under evaluation



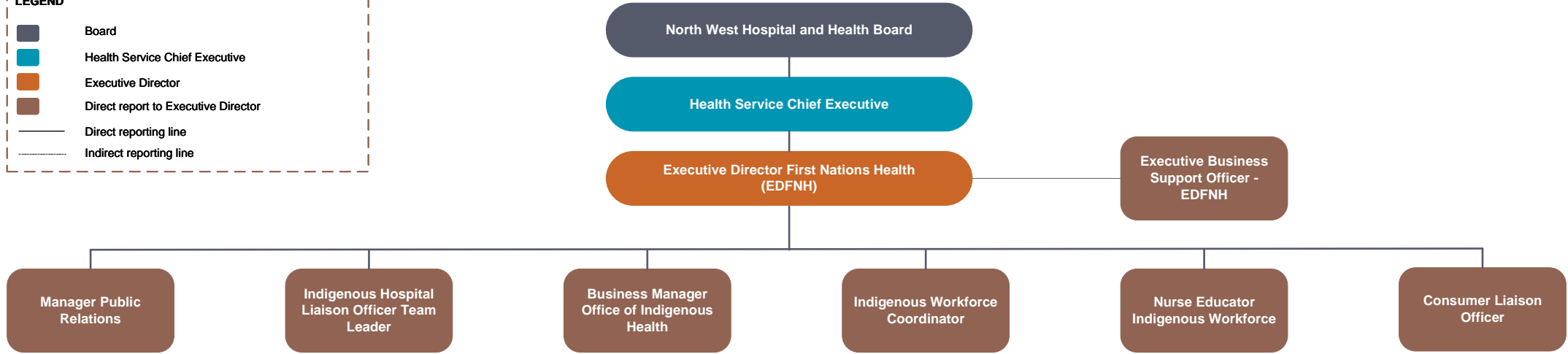
Nurses and Midwives have a professional reporting relationship to the Executive Director Nursing and Midwifery
 Medical Officers have a professional reporting relationship to the Executive Director Medical Services
 Health Practitioners have a professional reporting line to the Executive Director Allied Health
 Identified positions have a professional reporting line to the Executive Director First Nations Health

North West Hospital and Health Service

Divisional Structure – Executive Director First Nations Health

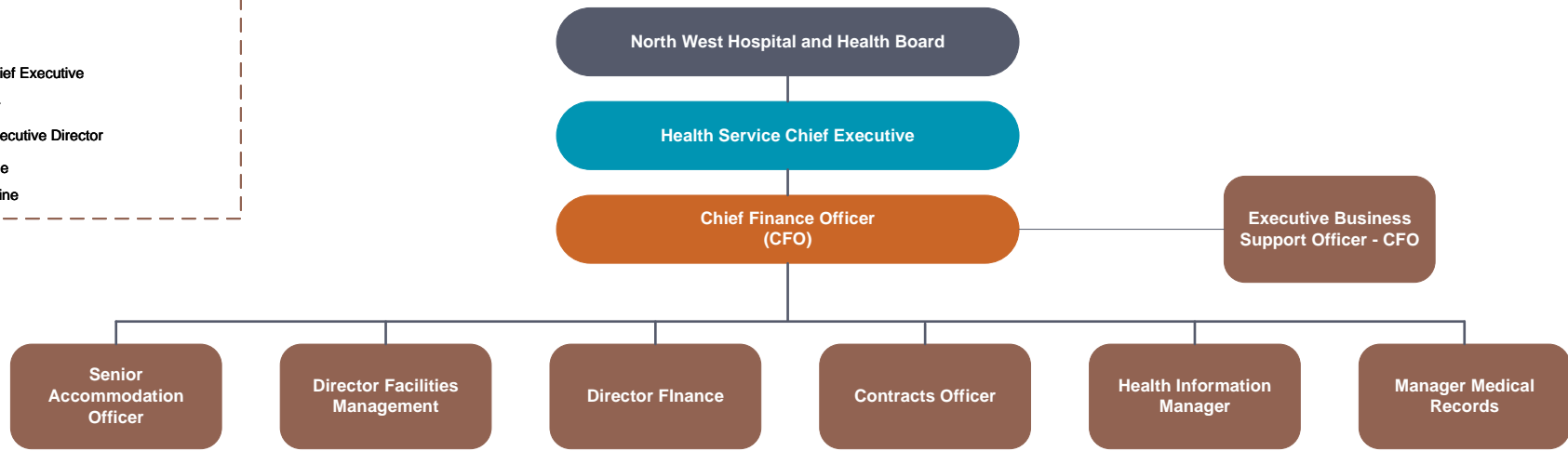
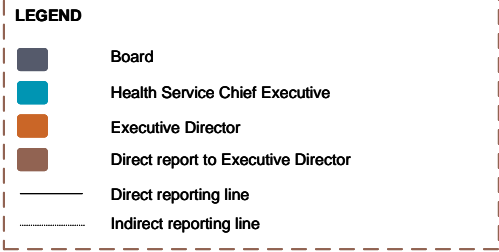
LEGEND

- Board
- Health Service Chief Executive
- Executive Director
- Direct report to Executive Director
- Direct reporting line
- ⋯ Indirect reporting line



Nurses and Midwives have a professional reporting relationship to the Executive Director Nursing and Midwifery
 Medical Officers have a professional reporting relationship to the Executive Director Medical Services
 Health Practitioners have a professional reporting line to the Executive Director Allied Health
 Identified positions have a professional reporting line to the Executive Director First Nations Health

North West Hospital and Health Service Divisional Structure – Chief Finance Officer



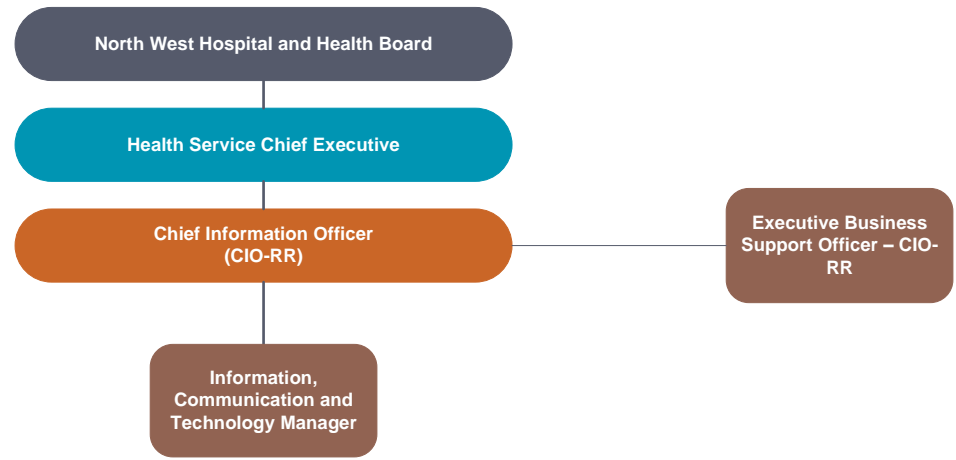
Nurses and Midwives have a professional reporting relationship to the Executive Director Nursing and Midwifery
 Medical Officers have a professional reporting relationship to the Executive Director Medical Services
 Health Practitioners have a professional reporting line to the Executive Director Allied Health
 Identified positions have a professional reporting line to the Executive Director First Nations Health

North West Hospital and Health Service

Divisional Structure – Chief Information Officer – Rural and Remote

LEGEND

- Board
- Health Service Chief Executive
- Executive Director
- Direct report to Executive Director
- Direct reporting line
- Indirect reporting line



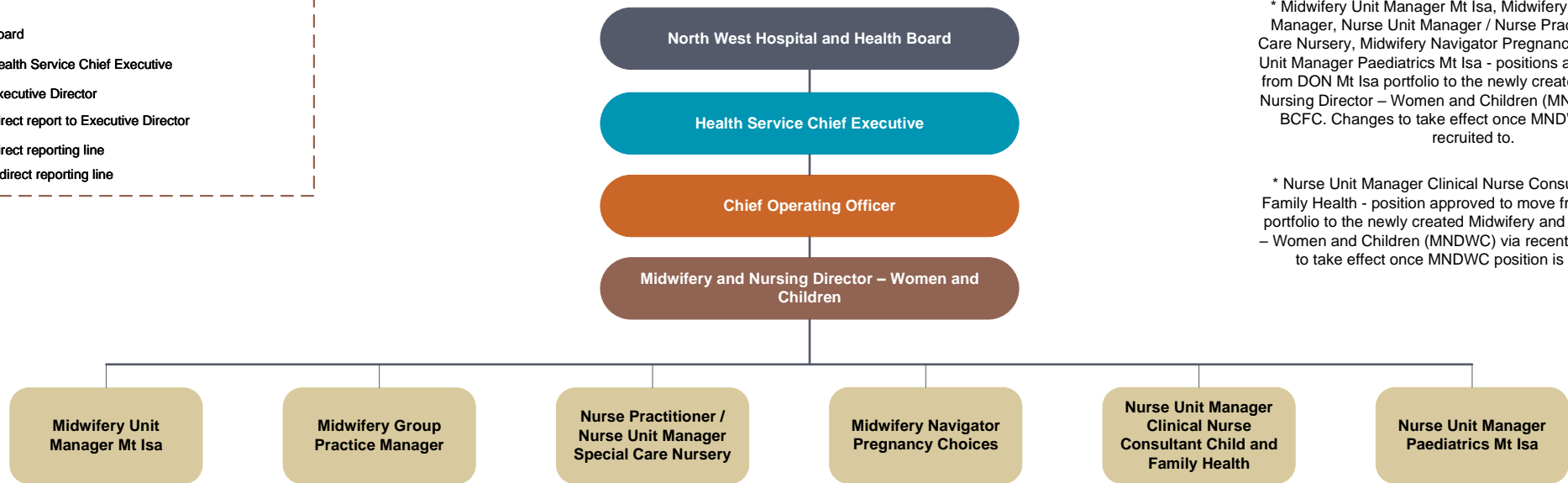
Nurses and Midwives have a professional reporting relationship to the Executive Director Nursing and Midwifery
 Medical Officers have a professional reporting relationship to the Executive Director Medical Services
 Health Practitioners have a professional reporting line to the Executive Director Allied Health
 Identified positions have a professional reporting line to the Executive Director First Nations Health

North West Hospital and Health Service

Divisional Structure – Midwifery and Nursing Director – Women and Children

LEGEND

- Board
- Health Service Chief Executive
- Executive Director
- Direct report to Executive Director
- Direct reporting line
- Indirect reporting line



* Midwifery Unit Manager Mt Isa, Midwifery Group Practice Manager, Nurse Unit Manager / Nurse Practitioner Special Care Nursery, Midwifery Navigator Pregnancy Choices, Nurse Unit Manager Paediatrics Mt Isa - positions approved to move from DON Mt Isa portfolio to the newly created Midwifery and Nursing Director – Women and Children (MNDWC) via recent BCFC. Changes to take effect once MNDWC position is recruited to.

* Nurse Unit Manager Clinical Nurse Consultant Child and Family Health - position approved to move from ADONCPHC portfolio to the newly created Midwifery and Nursing Director – Women and Children (MNDWC) via recent BCFC. Changes to take effect once MNDWC position is recruited to.

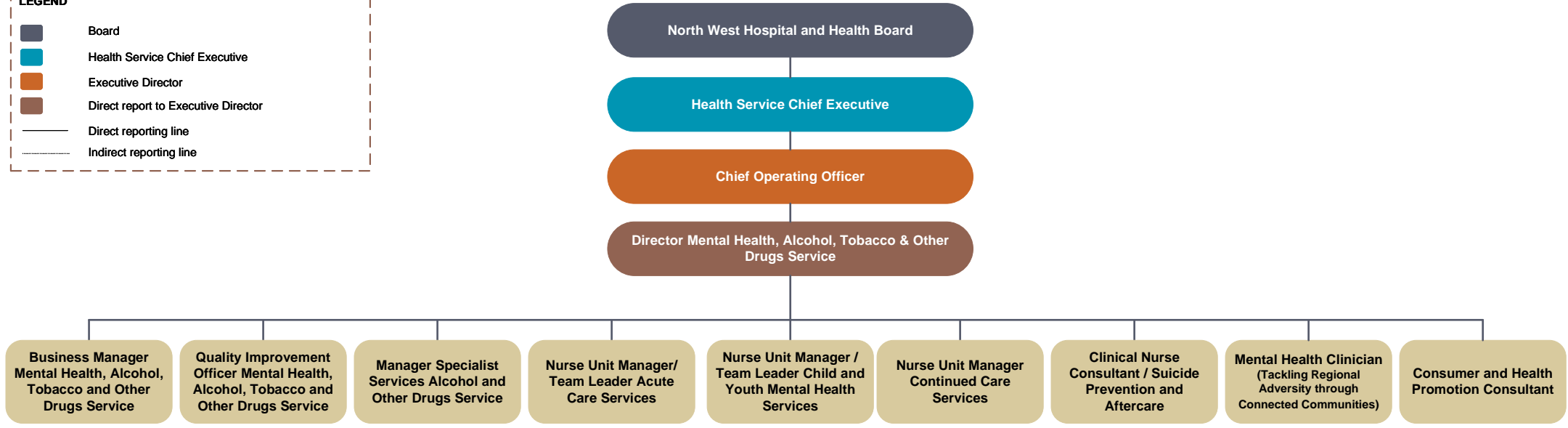
Nurses and Midwives have a professional reporting relationship to the Executive Director Nursing and Midwifery
 Medical Officers have a professional reporting relationship to the Executive Director Medical Services
 Health Practitioners have a professional reporting line to the Executive Director Allied Health
 Identified positions have a professional reporting line to the Executive Director First Nations Health

North West Hospital and Health Service

Divisional Structure – Director Mental Health, Alcohol, Tobacco & Other Drugs Service

LEGEND

- Board
- Health Service Chief Executive
- Executive Director
- Direct report to Executive Director
- Direct reporting line
- ⋯ Indirect reporting line



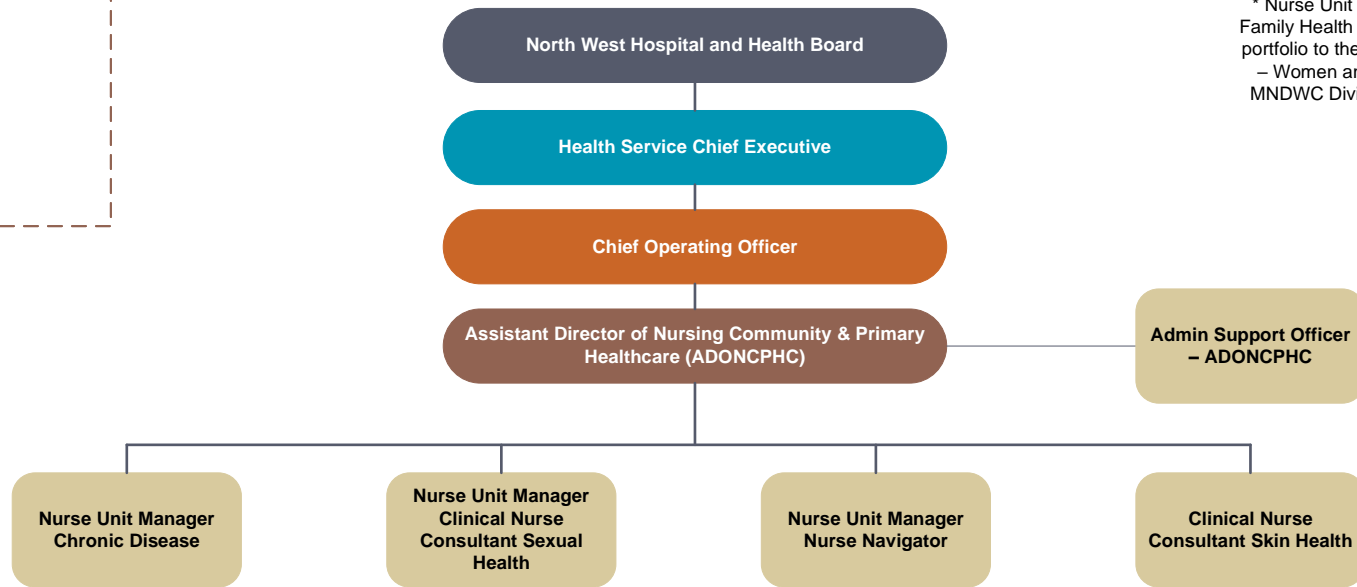
Nurses and Midwives have a professional reporting relationship to the Executive Director Nursing and Midwifery
 Medical Officers have a professional reporting relationship to the Executive Director Medical Services
 Health Practitioners have a professional reporting line to the Executive Director Allied Health
 Identified positions have a professional reporting line to the Executive Director First Nations Health

North West Hospital and Health Service

Divisional Structure – Assistant Director of Nursing Community & Primary Healthcare

LEGEND

- Board
- Health Service Chief Executive
- Executive Director
- Direct report to Executive Director
- Direct reporting line
- ⋯ Indirect reporting line



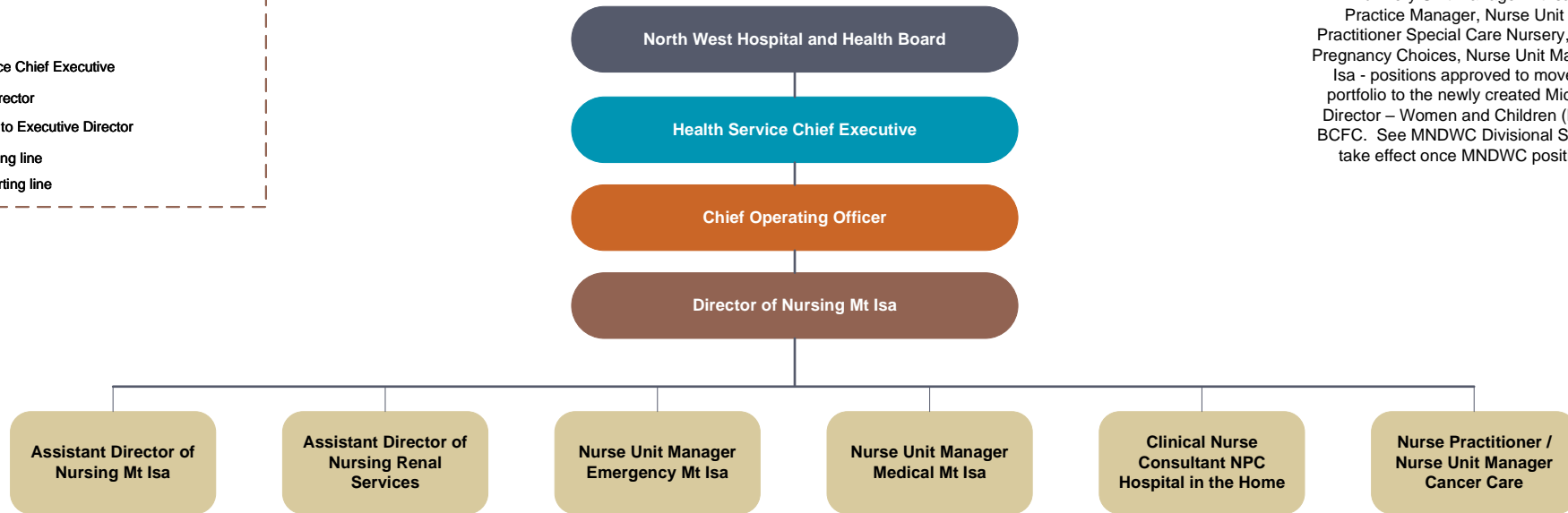
* Nurse Unit Manager Clinical Nurse Consultant Child and Family Health - position approved to move from ADONCPHC portfolio to the newly created Midwifery and Nursing Director – Women and Children (MNDWC) via recent BCFC. See MNDWC Divisional Structure. Changes to take effect once MNDWC position is recruited to.

Nurses and Midwives have a professional reporting relationship to the Executive Director Nursing and Midwifery
 Medical Officers have a professional reporting relationship to the Executive Director Medical Services
 Health Practitioners have a professional reporting line to the Executive Director Allied Health
 Identified positions have a professional reporting line to the Executive Director First Nations Health

North West Hospital and Health Service Divisional Structure – Director of Nursing Mt Isa

LEGEND

- Board
- Health Service Chief Executive
- Executive Director
- Direct report to Executive Director
- Direct reporting line
- Indirect reporting line



* Midwifery Unit Manager Mt Isa, Midwifery Group Practice Manager, Nurse Unit Manager / Nurse Practitioner Special Care Nursery, Midwifery Navigator Pregnancy Choices, Nurse Unit Manager Paediatrics Mt Isa - positions approved to move from DON Mt Isa portfolio to the newly created Midwifery and Nursing Director – Women and Children (MNDWC) via recent BCFC. See MNDWC Divisional Structure. Changes to take effect once MNDWC position is recruited to.

Nurses and Midwives have a professional reporting relationship to the Executive Director Nursing and Midwifery
 Medical Officers have a professional reporting relationship to the Executive Director Medical Services
 Health Practitioners have a professional reporting line to the Executive Director Allied Health
 Identified positions have a professional reporting line to the Executive Director First Nations Health